



## HOT DRINKS

### Coffee

Flat White, Cappuccino, Long Black,  
Latte, Espresso, Chai Latte  
+ Extra Shot  
+ Soy Milk or Almond Milk  
+ Oat Milk or Lactose Free Milk

### Tea

Black, Green, English Breakfast,  
Peppermint



## DESSERTS

### Sticky Date Pudding

With vanilla icecream

### Pecan Tart

With vanilla icecream

### Apple Pie

With vanilla icecream



## MILKSHAKES

### Vanilla

Chocolate  
Strawberry  
Caramel

### Iced-Coffee

Made with milk and icecream

## ALCOHOLIC BEVERAGES

### Pre Mix

Jack Daniels & Cola  
Jim Beam & Cola  
Bundy & Cola  
Canadian Club & Dry  
Gordon's Gin & Tonic  
Matso's Ginger Beer

### Beer

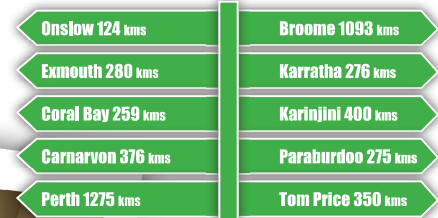
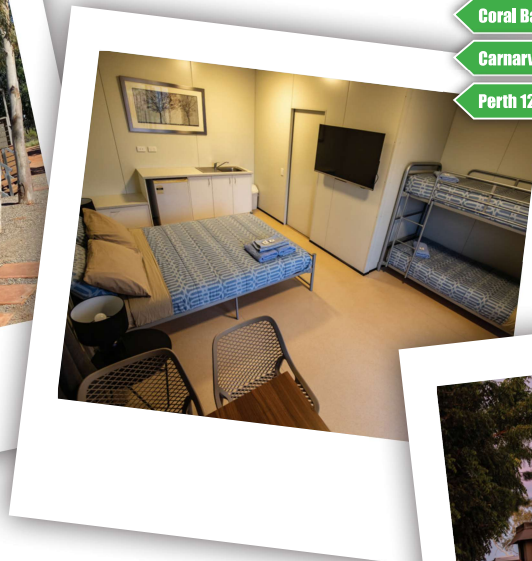
Carlton Dry  
Emu Export  
VB  
XXXX  
Great Northern  
Corona

### Wines, 750ml

House Red or White  
Premium Red or White

### Wines, 375ml

Semillon Sauvignon Blanc  
Shiraz



**NANUTARRA**  
ROADHOUSE  
BAR & RESTAURANT

STOP RELAX, RECHARGE AND REFUEL  
ON YOUR TRIP THROUGH THE PILBARA